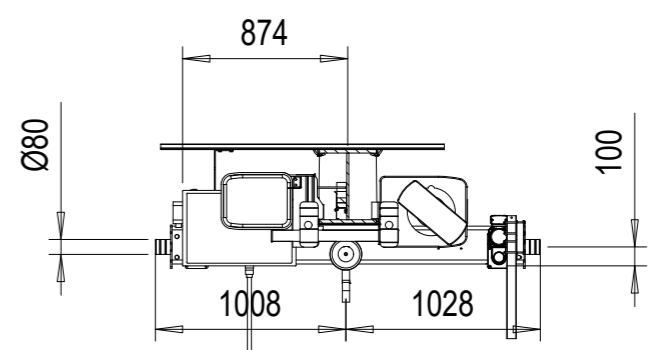
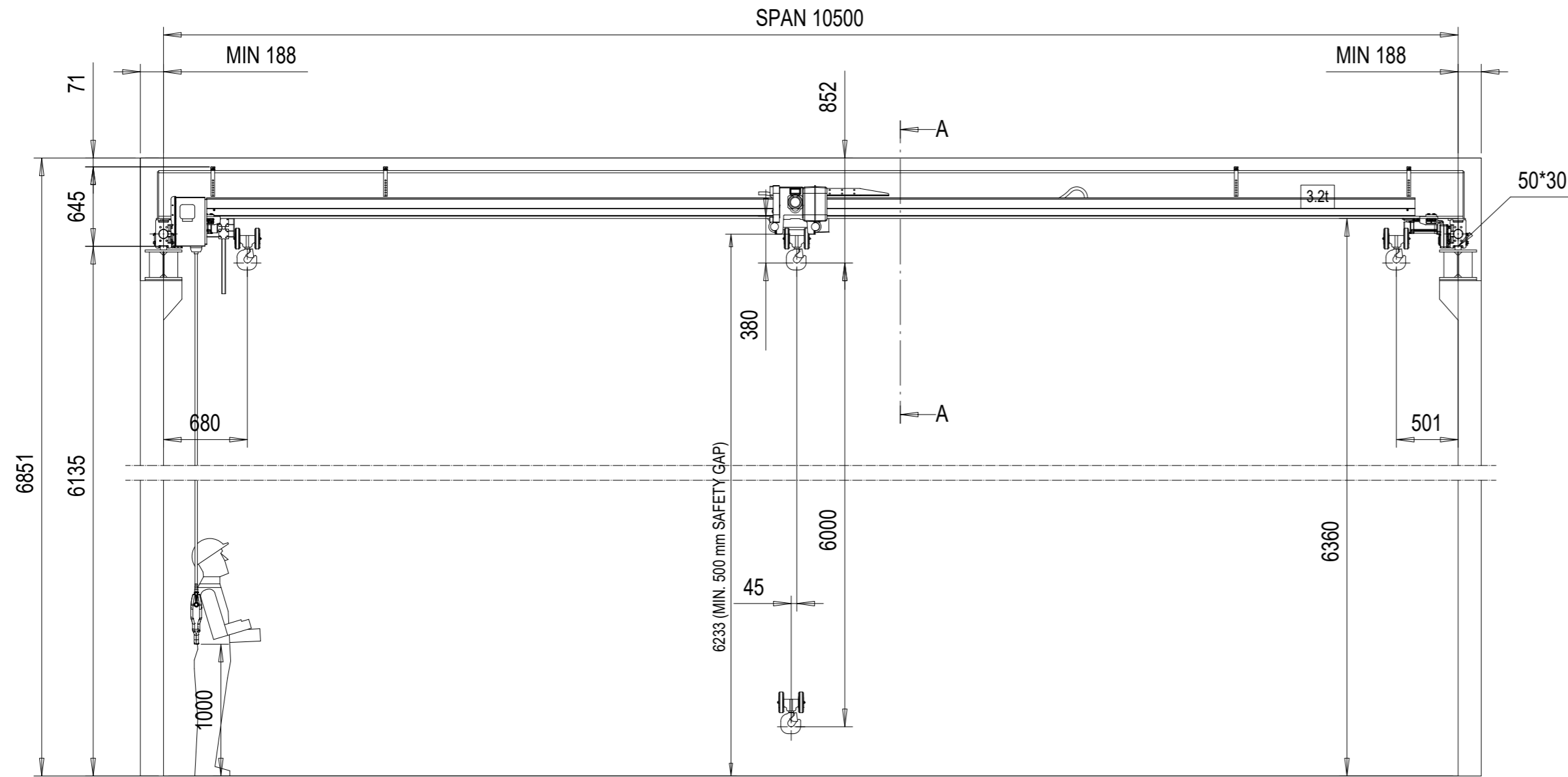
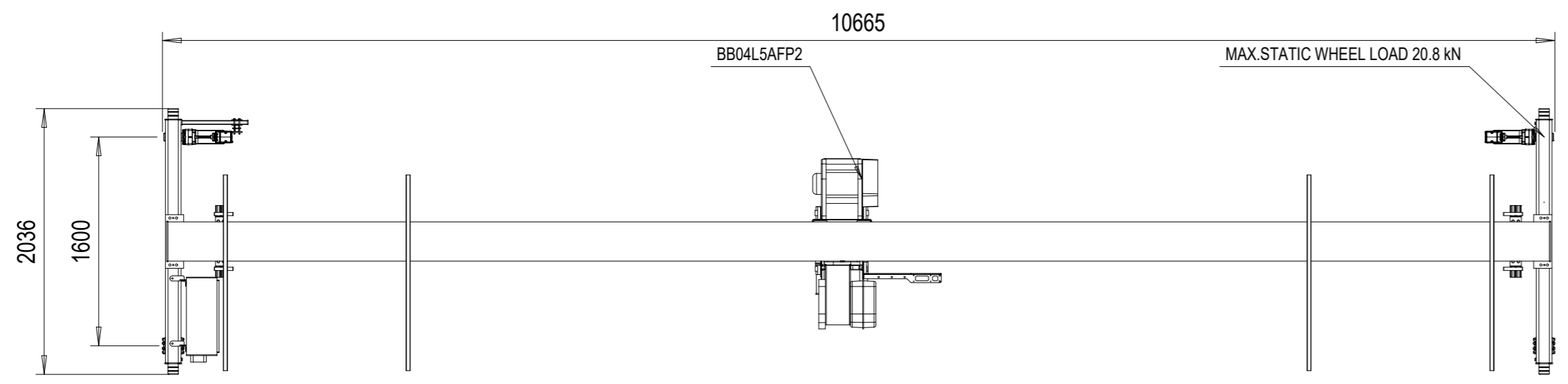


REV	CHANGE DESCRIPTION	ECN	DATE	REVISED BY	APPROVED BY
-----	--------------------	-----	------	------------	-------------

3.2-10.5-6-O



VIEW A-A



**TECHNICAL DATA**

SPAN	: 10.5 m
LOAD	: 3.2t
LIFTING HEIGHT	: 6 m
HOISTING SPEED	: 5/0.83 m/min 2-speed
TRAVERSING SPEED	: 20/5 m/min 2-speed pole change
TRAVELLING SPEED	: 40/10 m/min 2-speed inverter
WEIGHT OF TROLLEY	: 220 kg
WEIGHT OF BRIDGE	: 1830 kg
CRANE GROUP	: H2B3
HOIST GROUP	: ISO M5
CRANE DRIVE GROUP	: M5
MAIN / CONTROL VOLTAGE	: 380 / 48 V; 50 Hz
SUPPLY POWER	: 4.5 kW
LENGTH OF RUNWAY	: 0 m

**SURFACE TREATMENT OF CRANE**  
 BRIDGE COLOR : Gelb  
 PAINT : AKRYL 70 µm

Runway tolerances must comply with standard ISO12488-1 TOLERANCE CLASS 2

CUSTOMER ORGANIZES SAFE PLATFORM FOR CRANE SERVICE

Indoor Use crane 5°...40° C  
 Radio controlled crane  
 Pendant as backup

ACCEPTED BY:

COMPANY:

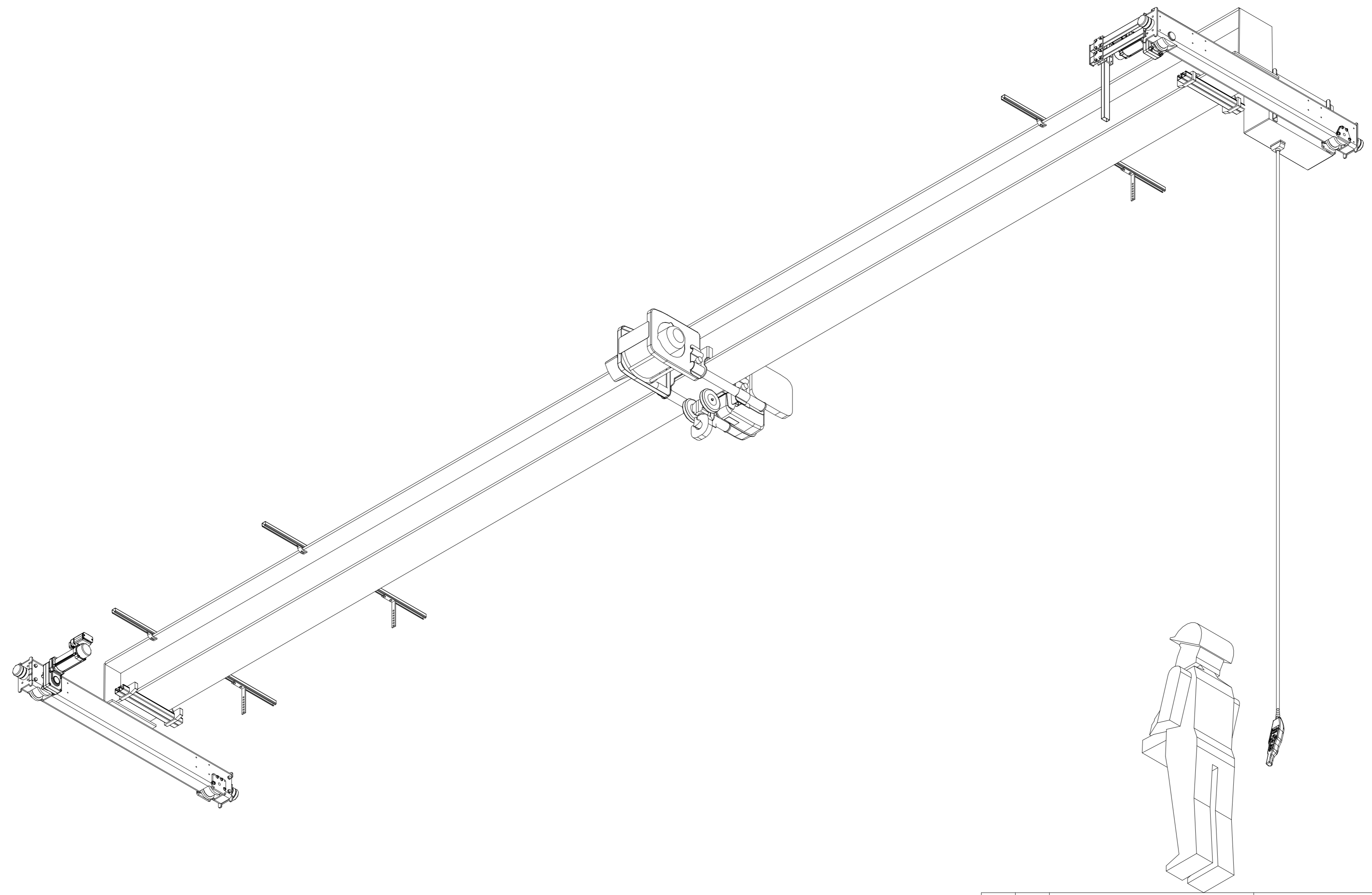
DATE:

Pos	Amount	Description	Specification
	DMA/SCG		DAS / 2.98.18
	Design	Chd	Vx proj
	20.03.2019	Appd	
	Date	Ref drawing	
	Schwäbisch Hall		
	Dept		
	<b>SWF</b>		
	<b>KRANTECHNIK</b>		
		BSC3.2t x 10.5m Hol:6m	1:40
			M-film
		3.2-10.5-6-O	Issue

SWF Krantechnik reserves the right to alter or amend the above information without notice. This document and the information contained herein is the exclusive property of SWF Krantechnik and represents a non-public, confidential and proprietary trade secret that may not be reproduced, disclosed to third parties, altered or otherwise employed in any manner whatsoever without the express written consent of SWF Krantechnik GmbH. Copyright © SWF Krantechnik. All rights reserved.

3.2-10.5-6-O-I

REV	CHANGE DESCRIPTION	ECN	DATE	REVISED BY	APPROVED BY
-----	--------------------	-----	------	------------	-------------



SWF Kranntechnik reserves the right to alter or amend the above information without notice.  
 This document and the information contained herein is the exclusive property of SWF Kranntechnik and represents a non-public,  
 confidential and proprietary trade secret that may not be reproduced, disclosed to third parties, altered or otherwise employed in any  
 manner whatsoever without the express written consent of SWF Kranntechnik GmbH. Copyright © SWF Kranntechnik. All rights reserved.

Pos	Amount	Description	Specification		
		DMA/SCG			DAS / 2.98.18
		Design	Chd	Appd	Ref drawing
		20.03.2019	BSC3.2t x 10.5m Hol:6m		
		Date			
		Schwäbisch Hall			
		Dept			
		<b>SWF</b> KRANTECHNIK	3.2-10.5-6-O-I		
					1:40 M-film Issue