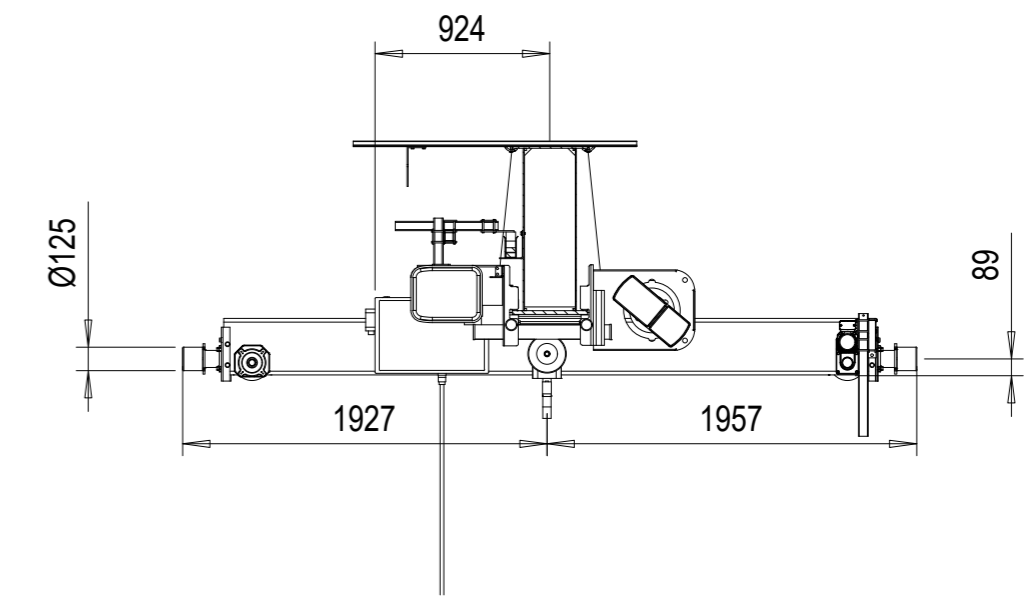
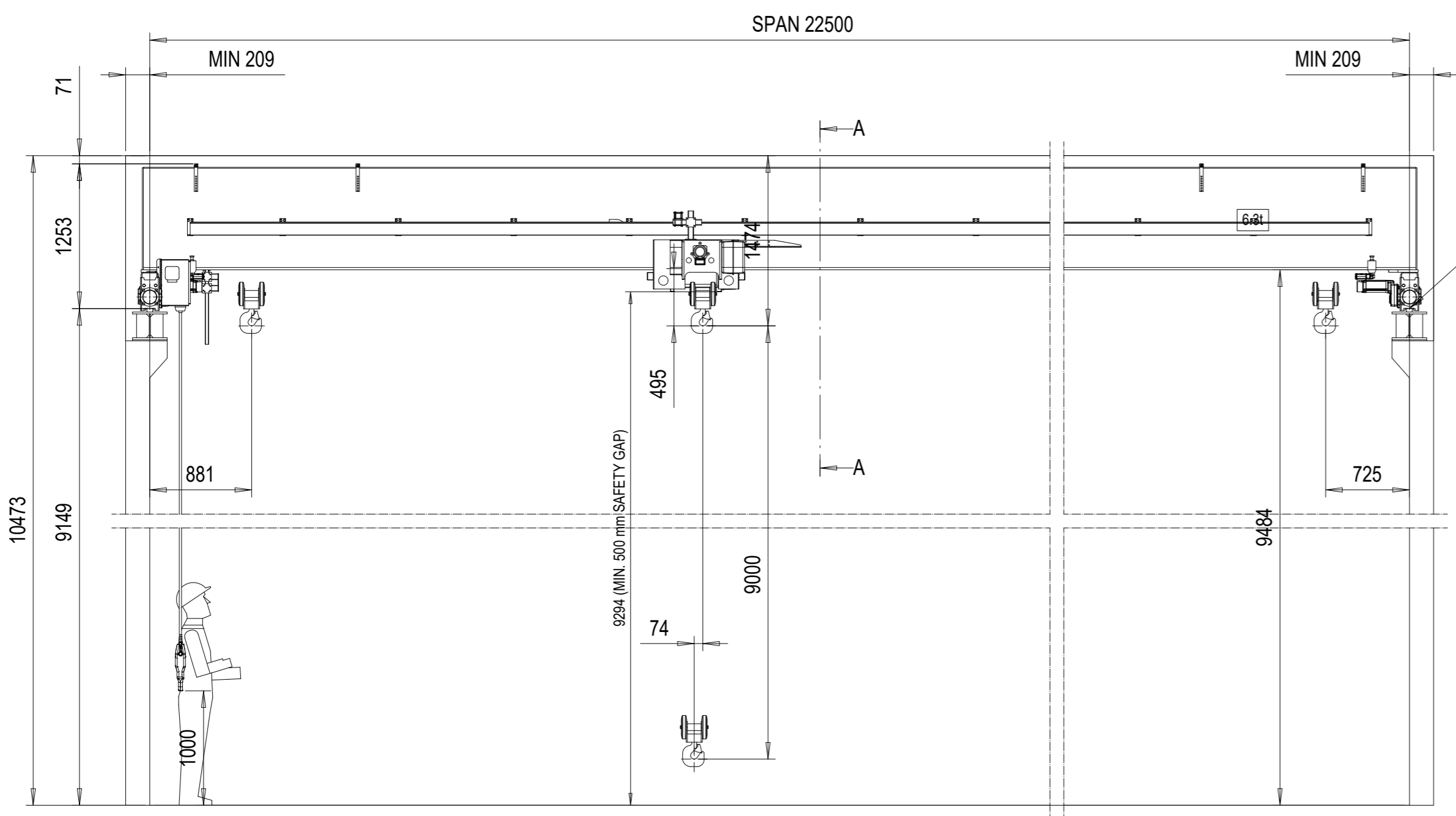
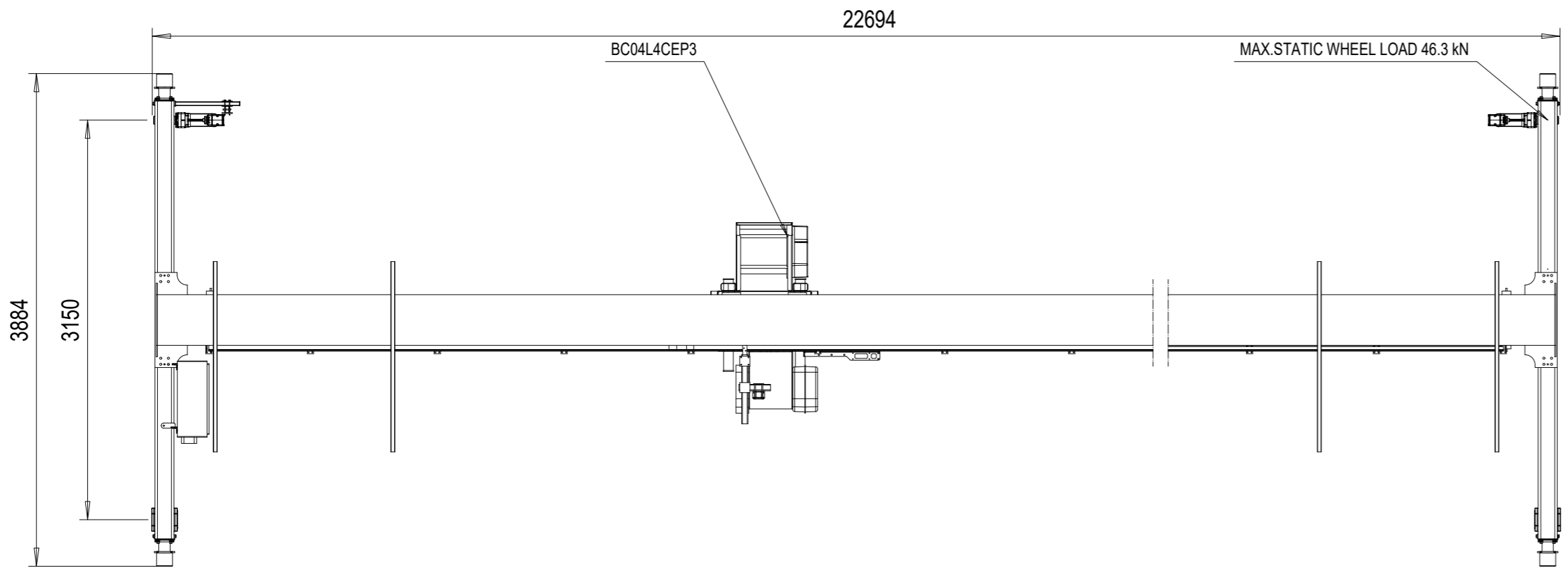


REV	CHANGE DESCRIPTION	ECN	DATE	REVISED BY	APPROVED BY
-----	--------------------	-----	------	------------	-------------

6.3-22.5-9-O



VIEW A-A



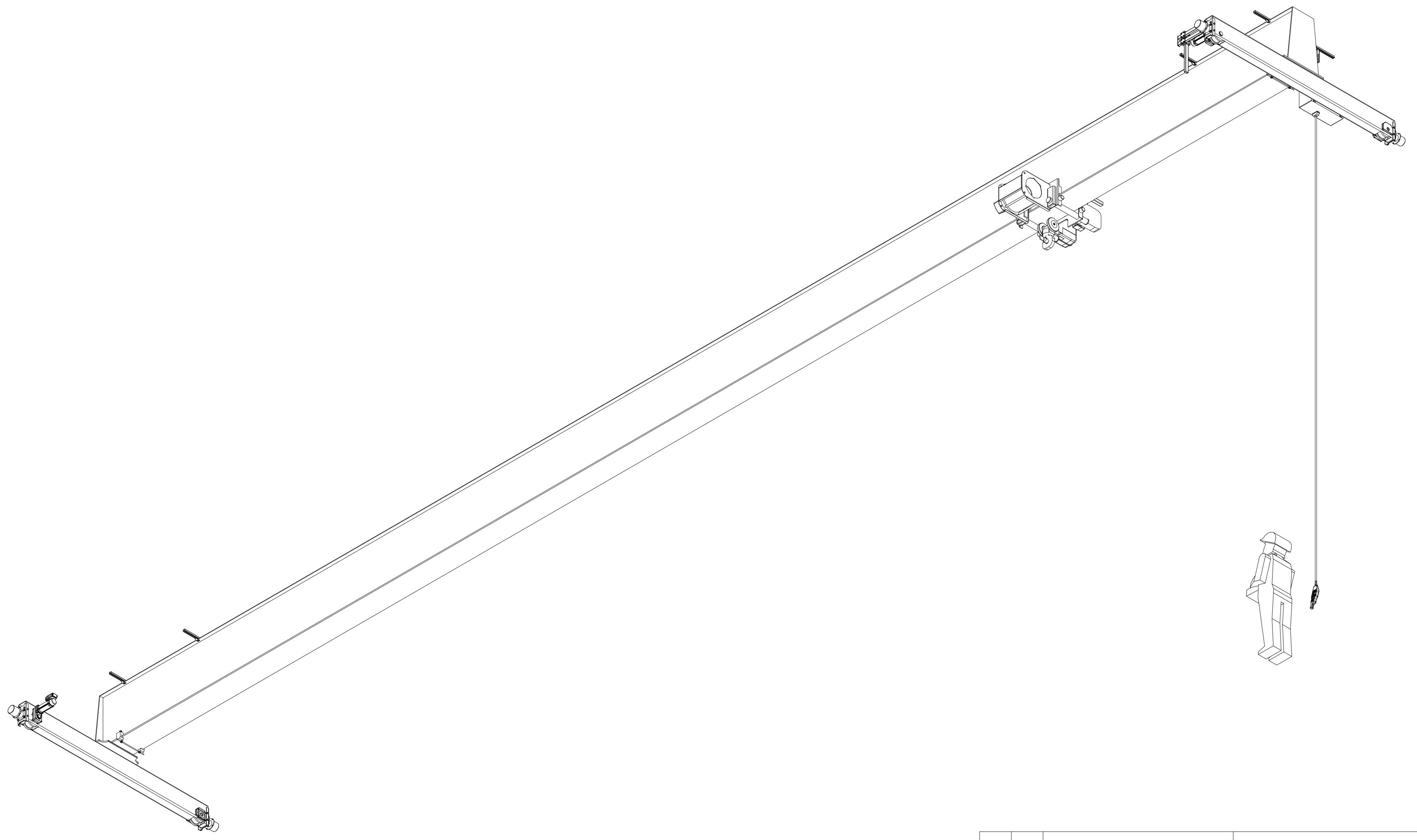
TECHNICAL DATA		SURFACE TREATMENT OF CRANE	
SPAN	: 22.5 m	BRIDGE COLOR	: Gelb
LOAD	: 6.3t	PAINT	: AKRYL 70 µm
LIFTING HEIGHT	: 9 m	Runway tolerances must comply with standard ISO12488-1 TOLERANCE CLASS 2	
HOISTING SPEED	: 4/0.67 m/min 2-speed	CUSTOMER ORGANIZES SAFE PLATFORM FOR CRANE SERVICE	
TRAVERSING SPEED	: 20/5 m/min 2-speed pole change	Indoor Use crane 5° ... 40° C	
TRAVELLING SPEED	: 40/10 m/min 2-speed inverter	Radio controlled crane	
WEIGHT OF TROLLEY	: 420 kg	Pendant as backup	
WEIGHT OF BRIDGE	: 5720 kg		
CRANE GROUP	: H2B3		
HOIST GROUP	: ISO M4		
CRANE DRIVE GROUP	: M5		
MAIN / CONTROL VOLTAGE	: 380 / 48 V; 50 Hz		
SUPPLY POWER	: 5.8 kW		
LENGTH OF RUNWAY	: 0 m		

ACCEPTED BY:	Pos	Amount	Description	Specification
COMPANY:		DMA/SCG		DAS / 2.98.18
		Design	Chd	Vx proj
		Date	Appd	
DATE:		27.03.2019		BSC6.3t x 22.5m Hol:9m
		Schwäbisch Hall		
		Dept		1:40
				M-film
				Issue
				6.3-22.5-9-O

SWF Krantechnik reserves the right to alter or amend the above information without notice. This document and the information contained herein is the exclusive property of SWF Krantechnik and represents a non-public, confidential and proprietary trade secret that may not be reproduced, disclosed to third parties, altered or otherwise employed in any manner whatsoever without the express written consent of SWF Krantechnik GmbH. Copyright © SWF Krantechnik. All rights reserved.

6.3-22.5-9-O-I

REV	CHANGE DESCRIPTION	ECN	DATE	REVISED BY	APPROVED BY
-----	--------------------	-----	------	------------	-------------



SWF Krantechnik reserves the right to alter or amend the above information without notice.  
 This document and the information contained herein is the exclusive property of SWF Krantechnik and represents a non-public,  
 confidential and proprietary trade secret that may not be reproduced, disclosed to third parties, altered or otherwise employed in any  
 manner whatsoever without the express written consent of SWF Krantechnik GmbH. Copyright © SWF Krantechnik. All rights reserved.

Pos	Amount	Description	Specification		
		DMA/SCG			DAS / 2.98.18
		Design	Chd	Appd	Ref drawing
		27.03.2019	BSC6.3t x 22.5m Hol:9m		
		Date			
		Schwäbisch Hall			
		Dept			
		<b>SWF</b> KRANTECHNIK	6.3-22.5-9-O-I		
			1:40		
			M-film		
			Issue		