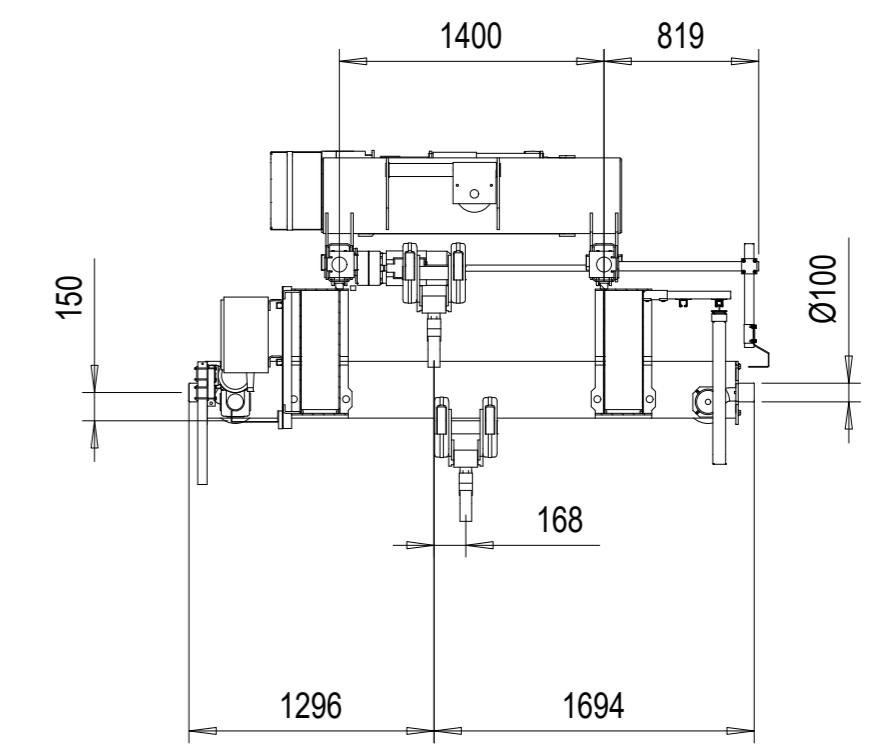
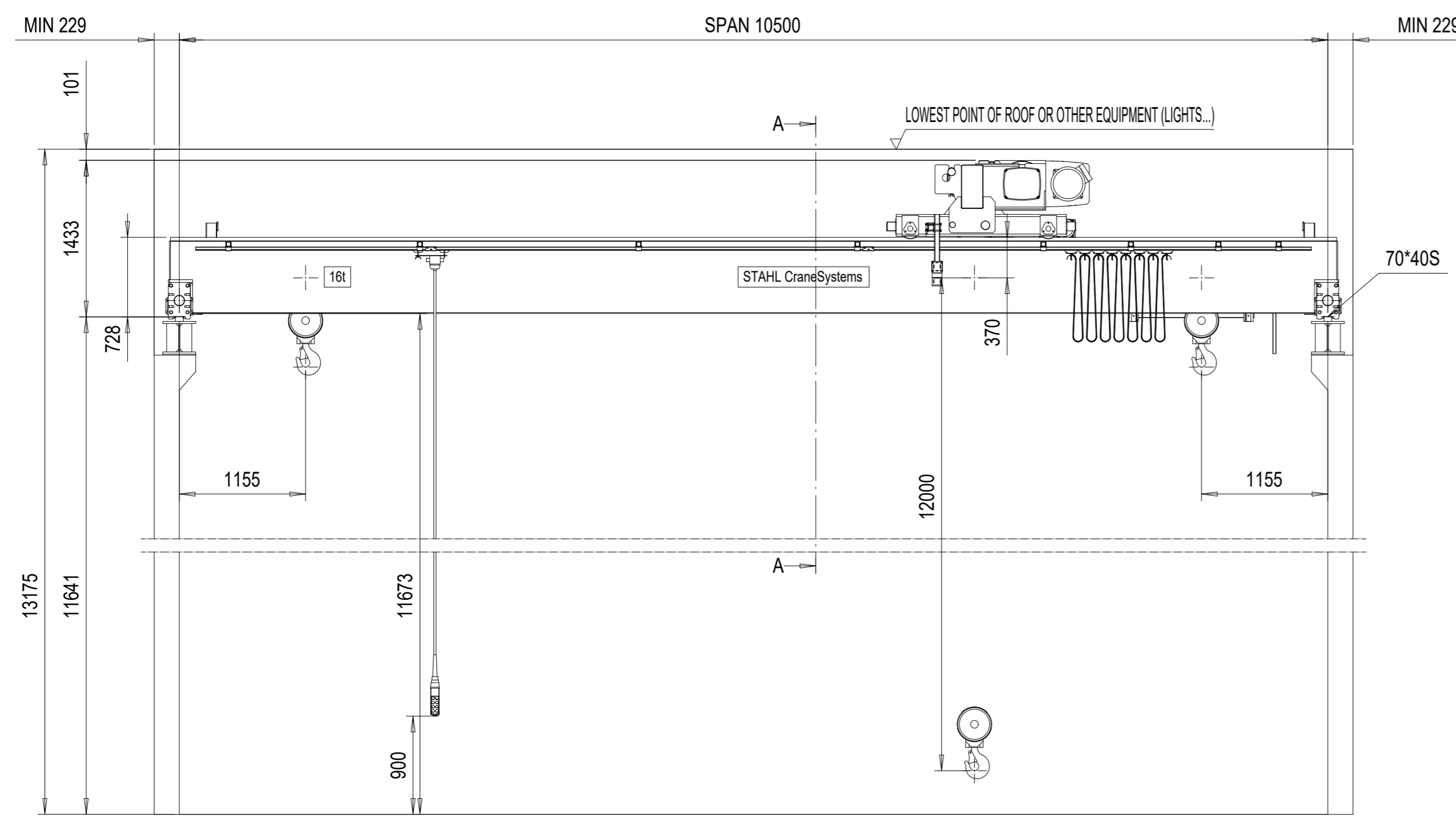


REV	CHANGE DESCRIPTION	ECN	DATE	REVISED BY	APPROVED BY
-----	--------------------	-----	------	------------	-------------

16-10.5-12-O

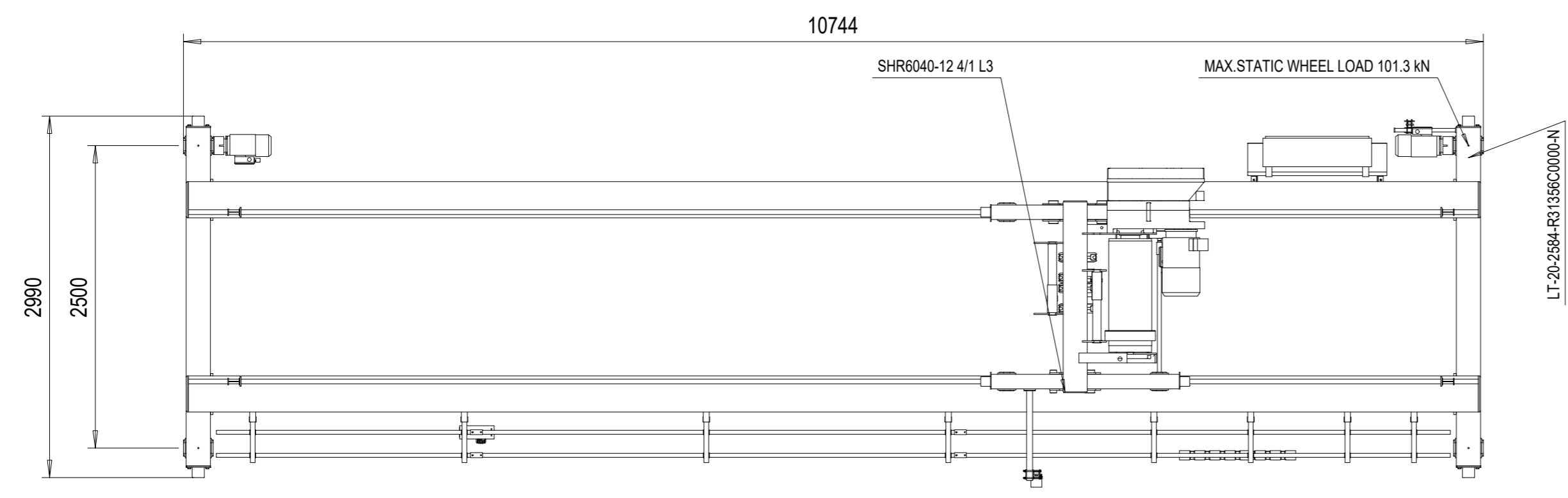
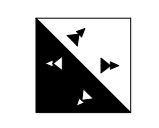


VIEW A-A

TECHNICAL DATA

CRANE	
LOAD	: 16000 kg
SPAN	: 10.5 m
LIFTING HEIGHT	: 12 m
TRAVELLING SPEED	: 40/10 m/min 2-speed pole change
WEIGHT OF BRIDGE	: 3520 kg
TOTAL WEIGHT	: 4870 kg
CRANE CLASSIFICATION	: U4/Q2, EN13001-1
CRANE DRIVE GROUP	: 25 m (D_lin6) / M5
LENGTH OF RUNWAY	: 50 m
HOIST	
HOISTING SPEED	: 3.1/0.52 m/min 2-speed
TRAVERSING SPEED	: 20/5 m/min 2-speed pole change
WEIGHT OF TROLLEY	: 1350 kg
HOIST GROUP	: 3,0 + 3,0 m (D_lin4) / ISO M4
ELECTRICAL EQUIPMENT	
MAIN/CONTROL VOLTAGE	: 380 / 48 V; 50 Hz
SUPPLY POWER	: 11.85 kW

TOLERANCES	
CRANE	:
RUNWAY	:
USE OF CRANE : Indoor Use crane -10° ...40° C	
CUSTOMER ORGANIZES SAFE PLATFORM FOR CRANE SERVICE	
Project sketch - for information only	
Subject to changes without prior notice	
Projektskizze - Änderungen vorbehalten	



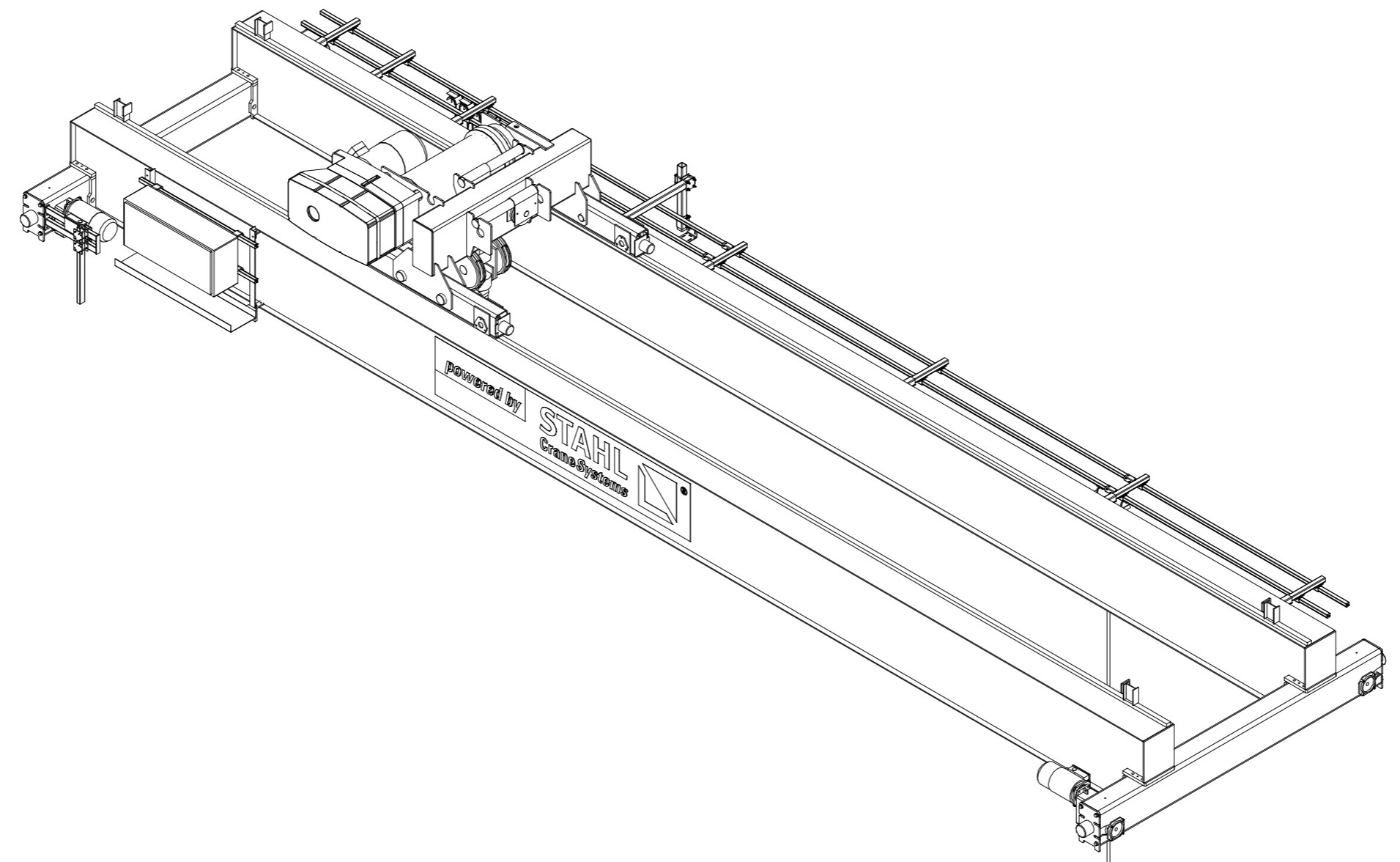
Note! Additional options can affect weights and dimensions of some components.

Approved:	Place	Date	Company (Company stamp)
Customer			
	Free size tolerance	Quotation No.	Version DAS
	Material	Order No.	NSL
	Reproduction and transmission to third parties is not permitted We reserve all rights under copyright for this drawing SHD16t x 10.5m Ho:12m		TCHAR
Company: STEPHAN CraneSystems GmbH		Scale: 1:40	
Issue	N/a	Copy to	
Released		16-10.5-12-O	
		Replaced by	

This document is the absolute property of STEPHAN CraneSystems GmbH. This document must not be copied without the written permission of STEPHAN CraneSystems GmbH or its parent company STAHL CraneSystems GmbH. The contents thereof must not be disclosed to a third party nor be used for any unauthorized purpose. Contravention will be prosecuted.

REV	CHANGE DESCRIPTION	ECN	DATE	REVISED BY	APPROVED BY
-----	--------------------	-----	------	------------	-------------

16-10.5-12-O-I



B

C

D

E

F

G

H

Approved: _____		Place _____		Date _____		Company (Company stamp) _____	
Customer _____		Free size tolerance _____		Quotation No. _____		Version DAS	
		Material _____		Order No. _____		NSL	
				Reproduction and transmission to third parties is not permitted We reserve all rights under copyright for this drawing		TCHAR	
Company: _____		Drawn by 04.04.2019 DMA/XRS		SHD16t x 10.5m Hol:12m		Scale	
				16-10.5-12-O-I		1:2.5	
Issue _____		N/a		Checked by _____		Copy to _____	
Released _____		Replaced by _____		_____		_____	

This document is the absolute property of STEPHAN CraneSystems GmbH. This document must not be copied without the written permission of STEPHAN CraneSystems GmbH or its parent company STAHL CraneSystems GmbH. This document is not to be used for any unauthorized purpose. Contravention will be prosecuted.